

M-CENTER

M-BUS, MODBUS & MORE

M-Bus

Modbus RTU RS485

Modbus TCP

MQTT

BACnet IP

OPC UA

LTE SIM Card Modem



EMU - energy meters, data loggers and energy management software straight from the manufacturer - everything from one source.

GENERAL INFORMATION

The M-Center with built-in heavy duty level converter ensures quick configuration and set-up. Automated readout of up to 250 M-Bus devices and 64 RS485 devices guarantees error-free and continuous data collection for later analysis and billing as per ISO 50001. Energy usage becomes transparent and potential savings identified.

CUSTOMER BENEFITS

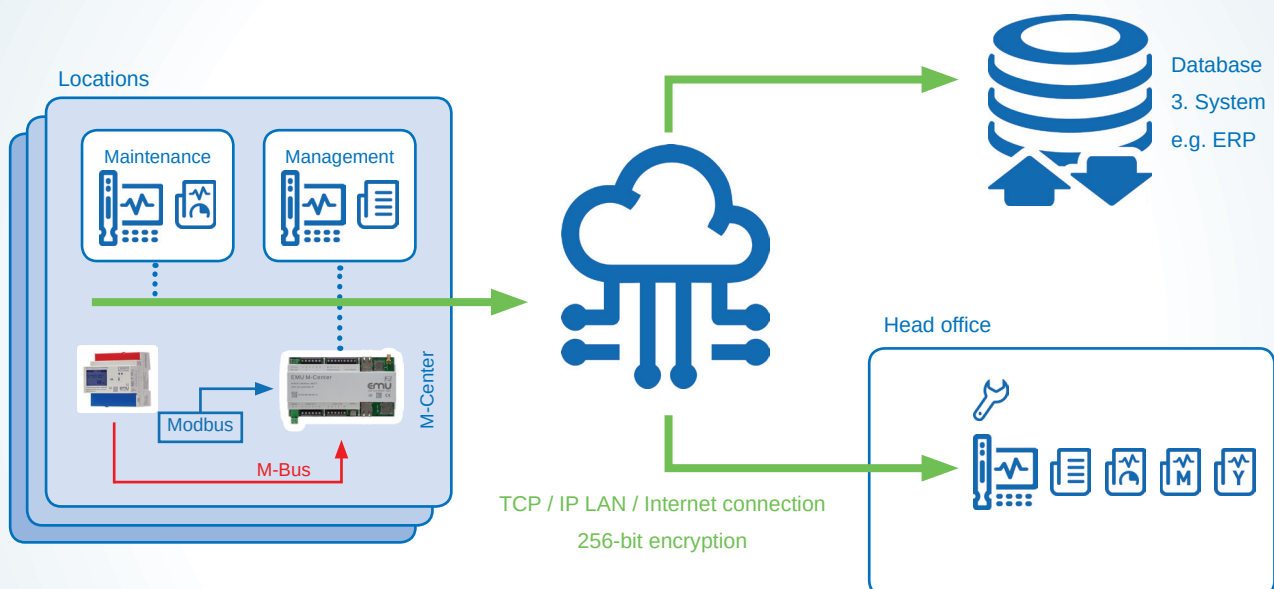
- Built-in M-Bus level converter for up to 250 M-Bus devices
- Suitable for heat, water, gas and electric meters with M-Bus, Modbus RTU and Modbus TCP
- Web-enabled, remote readout via web browser
- Professional data processing
- Energy usage becomes transparent for targeted measures
- Device Management & Digital Twin

FEATURES AND REQUIREMENTS AS PER ISO 50001

- Continuous data evaluation
- Visualisation incl. individual graphs
- Automated reporting
- Alerting
- Integration into existing systems
- Support & update service
- The M-Center combined with the Joulio-Web application fulfills all requirements

EMU M-CENTER: FLEXIBLE, EXPANDABLE

A hardware product with modular firmware - ready for the future. The M-Center is configured entirely using an appealing, user-friendly interface operable with any customary web browser (HTML5). The device management with Joulio-Web allows for simple management of scattered installations.



CUSTOMER BENEFITS

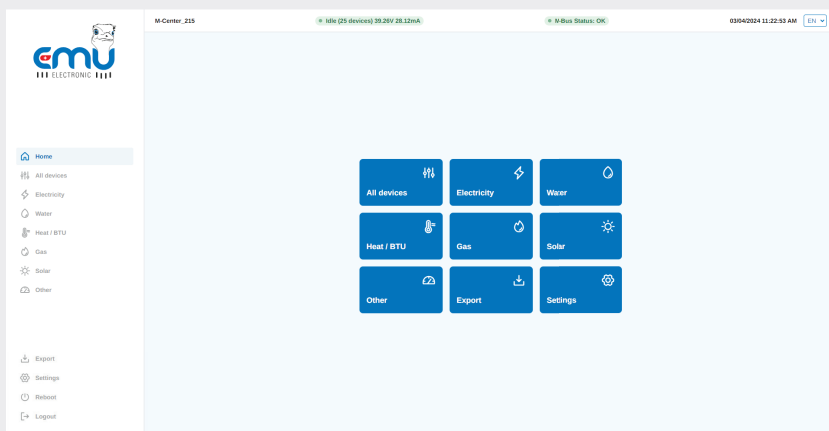
- One hardware
- Modular Firmware
- Device Management via Joulio-Web
- System integration via MQTT, OPC UA, BACnet IP, Modbus RTU and Modbus TCP
- Suitable for energy data management as per ISO 50001



KEY FEATURES

GENERAL MENU NAVIGATION

- Home page with user-friendly grouping
- Overview of all meters
- Meter and data logger configuration
- Backup and data export
- Status of the readout is immediately visible



BMS INTEGRATION

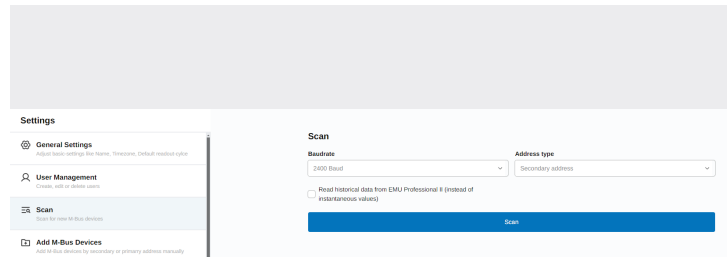
- BACnet IP Gateway with BBMD function
- OPC UA
- MQTT
- Modbus TCP
- Modbus RTU

SET-UP

- Automatic meter scan
- Supports M-Bus primary and secondary address
- 300, 2400 and 9600 baud
2400 baud recommended

MQTT

- Data transmission via MQTT protocol
- Configurable topics
- Configurable Quality of Service(QoS)



COMPATIBILITY

- Meters with M-Bus interface per EN 13757-2,-3, e.g. electric, water, heat, gas
- RS485 Modbus RTU
- Modbus TCP
- Device driver by device management

KEY FEATURES

HARDWARE AND SOFTWARE

- Integrated high performance level converter
- Internal data storage
- Modular software architecture
- M-Bus short-circuit and excess current monitor
- Internal 230VAC Power supply

EVENTLOG

- Meter readout failure
- M-Bus error flags analysis
- Eventlog for communication with third-party systems

MBUS

- Nominal Voltage Master Port: 40VDC
- Baud rate Master Port: 300, 2400, 9600
- Search modes: Automatic Primary and Secondary.
Devices can also be added manually.
- Maximum Cable Length: 5000 Meter (100nf/km, maximal 90 ohm)
- Maximum Load: 450mA permanent, 600mA peak

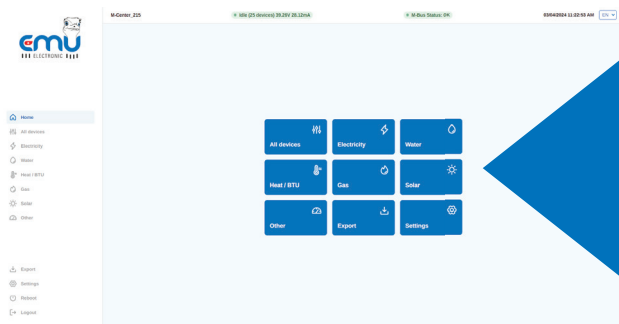
HARDWARE

INTERFACES

| | |
|-----------------|---|
| Inputs | 2 x M-Bus 2 x RS485 8 x Flex I/O 1x M-Bus sniffer |
| Interfaces | 1 x USB C 1 x Ethernet 10/100 Base RJ45 1 x Ethernet Service Port 1 x LTE Modem (SIM Card) |
| BMS integration | MQTT BACnet IP OPC UA Modbus RTU and TCP |
| Power supply | 230VAC |



| Part number | Designation |
|-------------|---|
| 210.000.00 | EMU M-Center for 20 M-Bus Devices |
| 210.020.01 | M-Center M-Bus License 20 to 60 Devices |
| 210.020.02 | M-Center M-Bus License 20 to 120 Devices |
| 210.020.03 | M-Center M-Bus License 20 to 250 Devices |
| 210.200.00 | M-Center License RS485 32 Devices |
| 210.200.01 | M-Center License RS485 64 Devices |
| 210.200.03 | M-Center License Modbus TCP 20 Devices (Reading) |
| 210.300.00 | M-Center License BACnet IP |
| 210.300.01 | M-Center License OPC UA |
| 210.300.03 | M-Center License MQTT |
| 210.300.04 | M-Center License Modbus TCP (M-Bus to Modbus TCP) |



Access any time, anywhere

The web interface of the EMU M-Center is easily operated from any PC or tablet via web browser.

1.

INSTALLATION

Full configuration via IP address and web browser. The EMU M-Center scans all connected meters via M-Bus secondary or primary address. Connects to the higher-level energy management system per ISO 50001 with just a few clicks.

2.

PLUG & PLAY CONFIGURATION

The connected meters are marked. Name, location, cost centre and comments are defined by meter.

3.

MEASUREMENTS - MEDIUMS

The open, integral energy management system reads all energy meters via M-Bus interface per EN 13757-2, -3. When required, individual device drivers are created on the EMU M-Center, exported and transferred to other M-Center.

In addition to active and reactive energy, the energy meters (electricity) for EMU also provide a number of other measurements, e.g. current, voltage, power ratings, Cos-Phi, frequency, etc. Of course these measurements are archived and transmitted to the higher-level energy management system.

4.

SECURITY

The clock is synchronised via Net Time Protocol (NTP) server. Faults are recorded in the event log and reported via e-mail.

IOT AND INDUSTRY 4.0

The Internet of Things (IoT) has been inspiring the economy and science alike for about 25 years. Machines and systems which communicate with each other automatically, control and optimise themselves are the next level of automation - the so-called Industry 4.0.

The M-Center features modern communication options with a service-based architecture and encrypted communication channels.

FLEXIBLE SYSTEM EXPANSION

Subsequent license-based firmware extension for optimum system connection

- MQTT
- BACnet IP
- OPC UA
- Modbus TCP
- Modbus RTU

METERS & READOUT

All energy meters (e.g. water, BTU, electricity and gas) with M-Bus interface per EN 13757-2,-3 (formerly EN1434-2,-3) are read out via two-wire line. Measurements and usage are archived to a SQL database. Two PT1000 temperature sensor are used to record e.g. the indoor and outdoor temperature.

Usage data can be analysed from any computer or tablet via IP address and web browser. The built-in data evaluation (web server) eliminates the need for M-Bus readout software.

M-BUS LEVEL CONVERTER OVER USB AND TCP/IP

The M-Center can be used as a M-Bus level converter over USB or TCP/IP. Existing M-Bus software tools can communicate with the M-Bus via USB port or TCP/IP.

MULTILINGUAL

The EMU M-Center is successfully being used on an international level. The web interface is multi-lingual.



M-BUS TO BACNET IP GATEWAY

B-ASC certified and BBMD function

The M-Center is furthermore an ideal system component for integration into a BACnet IP network. Once an M-Bus device is registered or imported to a Center, it is immediately readable via the BACnet IP. The M-Center and the registered M-Bus devices are each detected as separate device objects with a static list of analogue input objects (M-Bus measurements). Integration into a higher-level BACnet IP system requires virtually no configuration.

MQTT GATEWAY

The M-Center makes all data points available to higher-level systems with just one click via MQTT.
Optional firmware license required.

OPC UA

The M-Center makes all data points available to higher-level systems with just one click via OPC UA.
Optional firmware license required.

M-BUS SYSTEM

- Polarity: Protected against reverse polarity, polarity independent
- Compatible topologies: Star, tree and linear structure
- Two-core, if possible shielded
- J-Y(ST) Y 2 x 2 x 0.8 mm
- Minimum distance to electric circuit, EMC interference
- M-Bus line as short as possible
- Master = EMU M-Center / level converter
- Slave = device, e.g. EMU energy meter

PLUG & PLAY CONFIGURATION

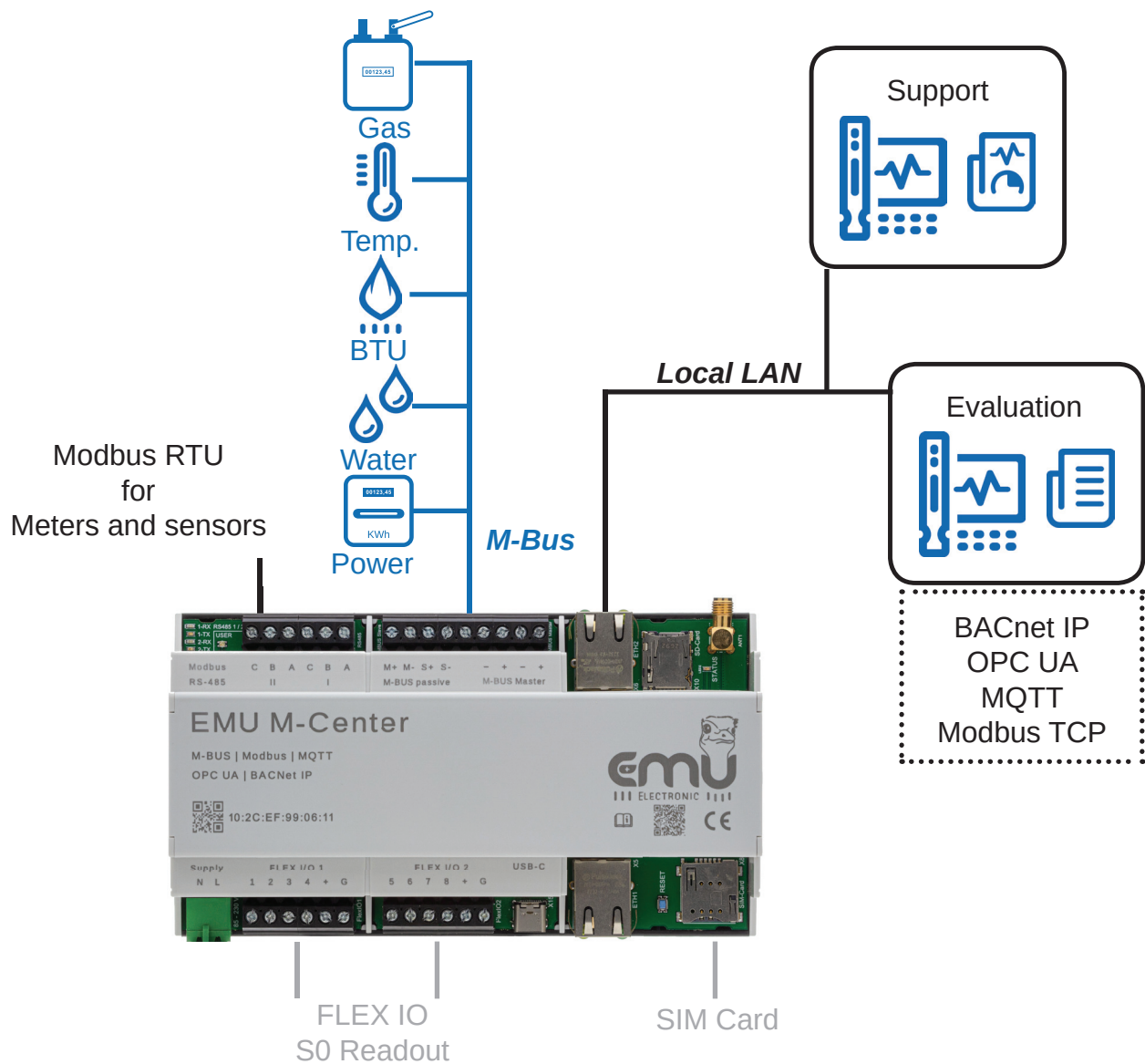
The automatic scan automatically detects and lists all connected M-Bus meters. The meters are then be configured. Each meter is assigned a name, cost centre and comments.

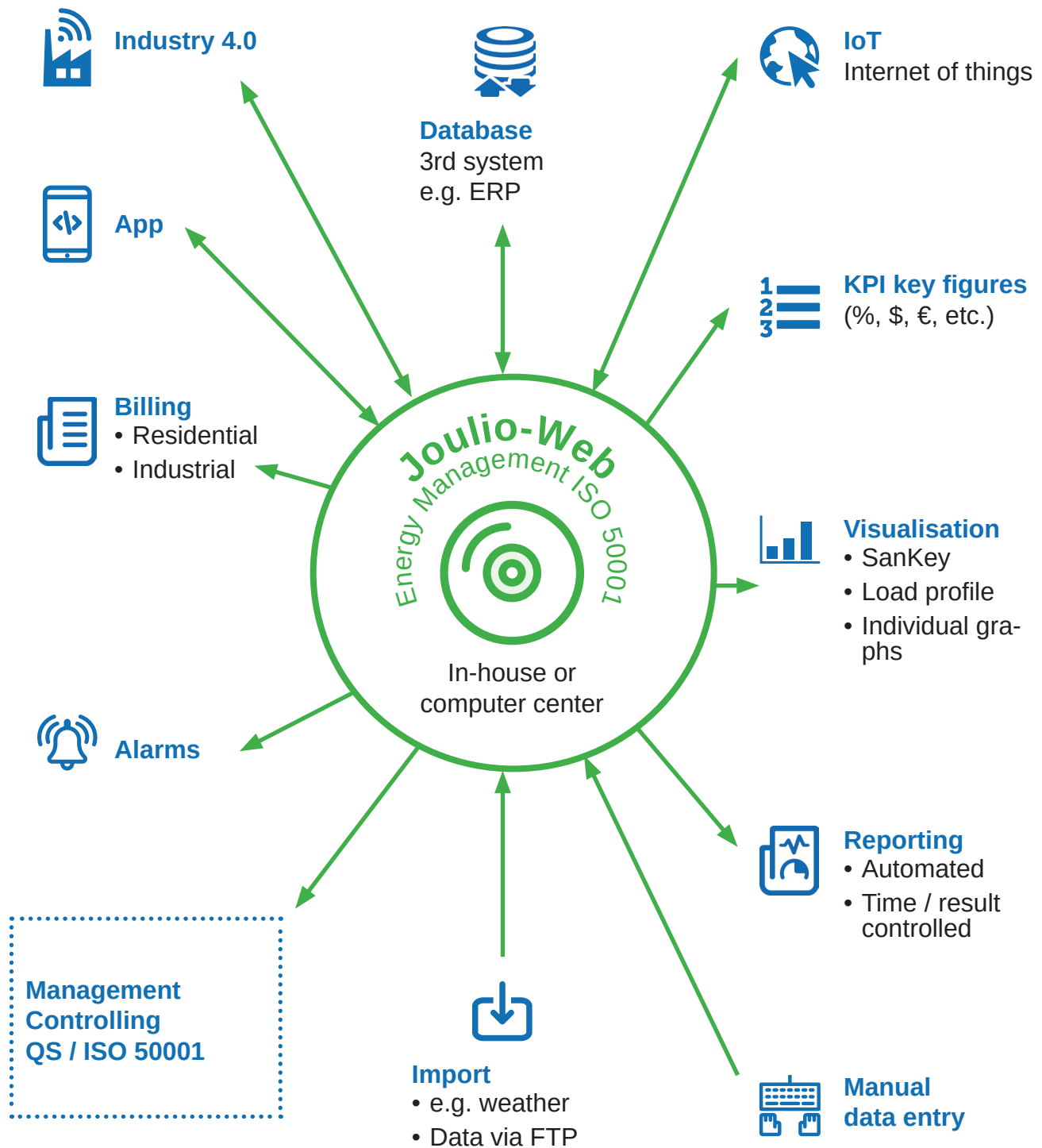
REFERENCE PROJECT: ETH HWW LIVINGSCIENCE

- Over 1300 meters (electricity, water and heat)
- Readout via EMU M-Center
- Web-based access for over 400 users, multilingual
- Individual software expansion

Management always has an overview of energy usage and variances. Just shortly after being set up the EMS software detected a variance (increased water usage) and prevented undesirable additional costs.

Locations





ORDERING INFORMATION

EVERYTHING YOU NEED FOR ENERGY MANAGEMENT

| | Article number | Designation |
|---|----------------|--|
| EMU M-Center Data logger & Gateway | 210.000.00 | EMU M-Center for 20 M-Bus Devices |
| | 210.020.01 | M-Center M-Bus License 20 to 60 Devices |
| | 210.020.02 | M-Center M-Bus License 20 to 120 Devices |
| | 210.020.03 | M-Center M-Bus License 20 to 250 Devices |
| | 210.200.00 | M-Center License RS485 32 Devices |
| | 210.200.01 | M-Center License RS485 64 Devices |
| | 210.200.03 | M-Center License Modbus TCP 20 Devices |
| | 210.300.00 | M-Center License BACnet IP |
| | 210.300.01 | M-Center License OPC UA |
| | 210.300.03 | M-Center License MQTT |
| | 210.300.04 | M-Center License Modbus TCP (M-Bus to Modbus TCP) |
| Energy Management ISO 50001 | 250.000.00 | Joulio-Web SaaS |
| | 250.001.00 | Joulio-Web Saas Charts-App |
| | 250.000.01 | Joulio-Web Saas Meter |
| Power meters with interface and MID approval | P20A000M | EMU Professional II 3/100 M-Bus, 3x230/400V, 100A |
| | P21A000M | EMU Professional II 3/5 M-Bus, 3x230/400V,CT /5 + /1A |
| | 950506 | EMU 1/40 M-Bus, 230V, 40A |
| | P20A000T | EMU Professional II 3/100 TCP/IP, 3x230/400V, 100A |
| | P21A000M | EMU Professional II 3/5 TCP/IP, 3x230/400V,CT /5 + /1A |
| | P20A000MO | EMU Professional II 3/100 Modbus RTU, 3x230/400V, 100A |
| | P21A000MO | EMU Professional II 3/5 Modbus RTU, 3x230/400V,CT /5 + /1A |

You can upgrade your M-Center licences at any time if the initially licenced number of devices no longer suffices.

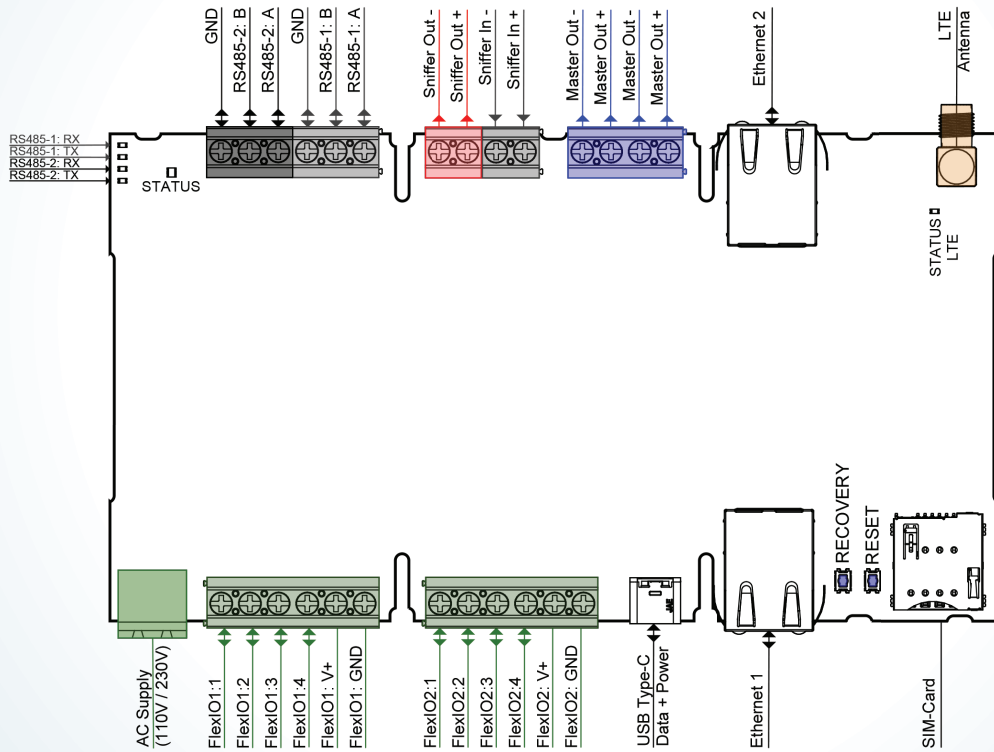
PRODUCT INFORMATION

| | |
|-------------------------|--|
| Number of M-Bus devices | 250 x 1.5mA, see order information |
| Evaluation | via Joulio-Web Energy Management Software |
| Ports | 1 x USB Typ C 1x LTE Modem (SIM card) 1 x Ethernet 10/100 Base RJ45 (LAN) 1 x Ethernet 10/100 Base RJ45 (Service) |
| Inputs | 2 x M-Bus 2 x RS485 8 x Flex I/O |
| M-Bus level converter | Integrated heavy duty level converter |
| Data export | via MQTT, BACnet IP, OPC UA and .csv/JSON file export |
| Data storage | 8GB internal |
| Firmware update | Yes, via device management |
| Backup | Yes, via device management |
| Configuration | Local and remote configuration via web server |

TECHNICAL DATA

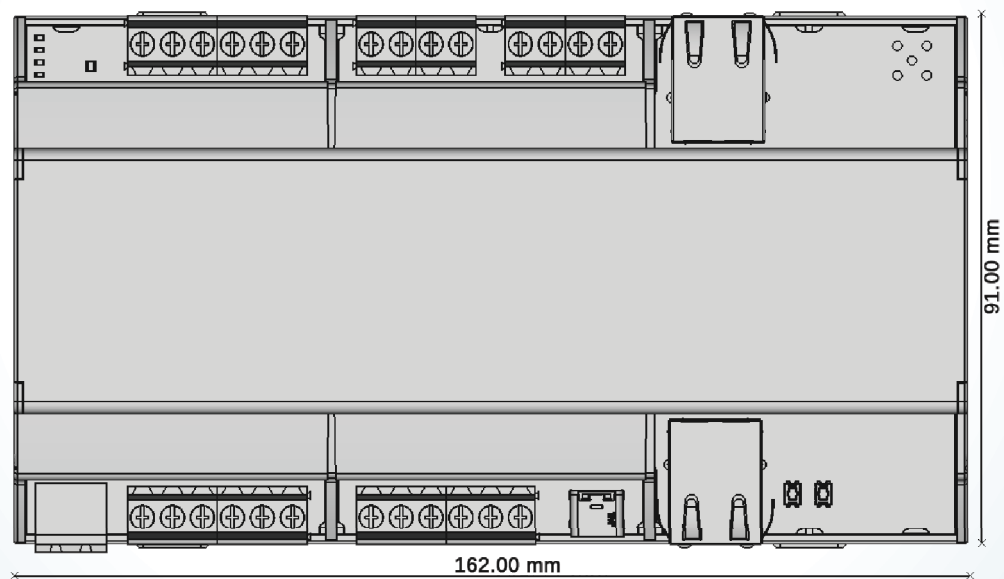
| | |
|---|---|
| Operating voltage | 230VAC, maximum 1 Ampere |
| Width | 162mm |
| Temperature range | 0-55°C |
| M-Bus baud rate | 300, 2400, 9600 |
| M-Bus current | Standby 450mA, Peak 600mA, see ordering information |
| Compatibility | Heat, water, gas and electricity meters with M-Bus per EN 13757-2, -3 (formerly EN1434-3) |
| Galvanic isolation, short circuit and overload protection | Yes |
| Security | CE mark |
| EMC measurement | EN 61000-6-2 |
| Immunity | EN 61000-6-3 |
| M-Bus standard | EN 13757-2,-3 |
| Energy management | Suitable for ISO 50001 |
| BACnet IP | B-ASC certified |
| Weight | Approx. 400g |
| Installation | 35mm DIN rail |
| Housing | Polycarbonate, recyclable, non-flammable |

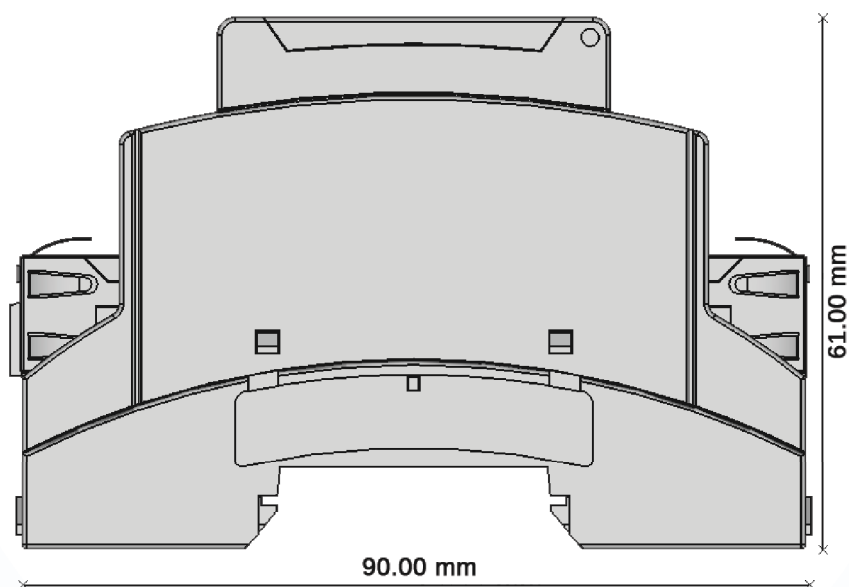
WIRING DIAGRAM



DIMENSIONAL DRAWING

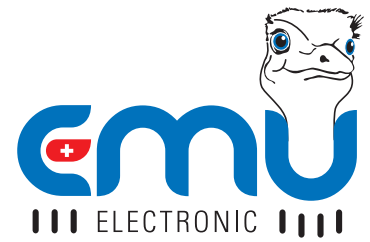
The M-Center mounts on a DIN rail.





Data specified in the product catalogue has been compiled in all conscience. Changes and errors expressly reserved. "Images similar" does not constitute a term of contract. This is a notice without autonomous scope which merely states the information in the catalogue is preliminary and non-binding in that it may be corrected before or on conclusion of contract. These notices do not provide any contractual scope, particularly any limitation in the rights of the contracting party with respect to liability or warranty.

We compile and update our compatibility lists with utmost care. Please contact our support service to verify compatibility with existing meters.



EMU Electronic AG

Jöchlerweg 2
6340 Baar
Switzerland

| | |
|----------|--|
| Tel. | +41 (0)41 545 03 00 |
| E-Mail: | info@emuag.ch |
| Website: | www.emuag.ch |

Date: 09.10.2024

Technical changes reserved.