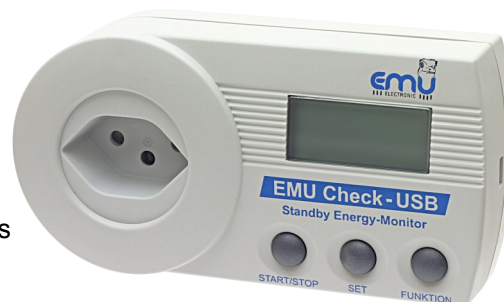


## Measured values

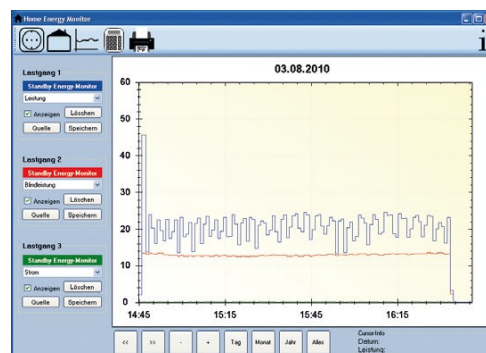
- Energy consumption in kWh with three decimal places
- Costs with three decimal places
- Min. power in W with one decimal place
- Max. power in W with one decimal place
- Active power in W with two decimal places
- Current in A with three decimal places
- Voltage in V with one decimal place
- Equivalent CO<sub>2</sub> consumption in kg with three decimal places
- Frequency in Hz without decimal place
- Reactive power in Var with one decimal place
- Apparent power in VA with one decimal place
- Phase shift in angle without decimal places
- Power factor cos phi with two decimal places



## EMU Check USB with Datalogger

The EMU Check USB is equipped with a data logger for active power, reactive power, current and voltage. The included software Home Energy Monitor displays the load-profile over the measurement period

- Data logger for current, voltage and active and reactive power
- Adjustable time integral  
1, 2, 3, 4, 5, 6, 10, 12, 15, 20, 30, 60 Min.
- Real-time clock
- Storage for 14.000 values
- Data readout via USB interface
- Data cable and software included



## Technical data

Voltage	U V	230; +/-10%
Current	I A	10 (CH, Typ 13 / J) and 16 (Schuko / EURO) plug
Frequency	f Hz	50/60
Measuring range	P W	0,1 - 3680
Accuracy	% 1	+/- 1 Digit
Own consumption	W	1
Temperature range	°C	0 ... +45° C
Protection class		IP 20
Weight	kg	0,2
Width	mm	138
Height	mm	70
Depth	mm	57

## Order information

950400 EMU Check USB with CH (Typ 13 / J) plug  
950402 EMU Check USB with Schuko (Euro) plug

950050 EMU Check with CH (Typ 13 / J) plug  
950051 EMU Check with Schuko (Euro) plug